



# MONTHLY MEMBERSHIP PROGRESS REPORT

District 1 G

Results as of: 06/30/2019

GMT: STEVE ANTON

LOCATION ILLINOIS

GMT CA

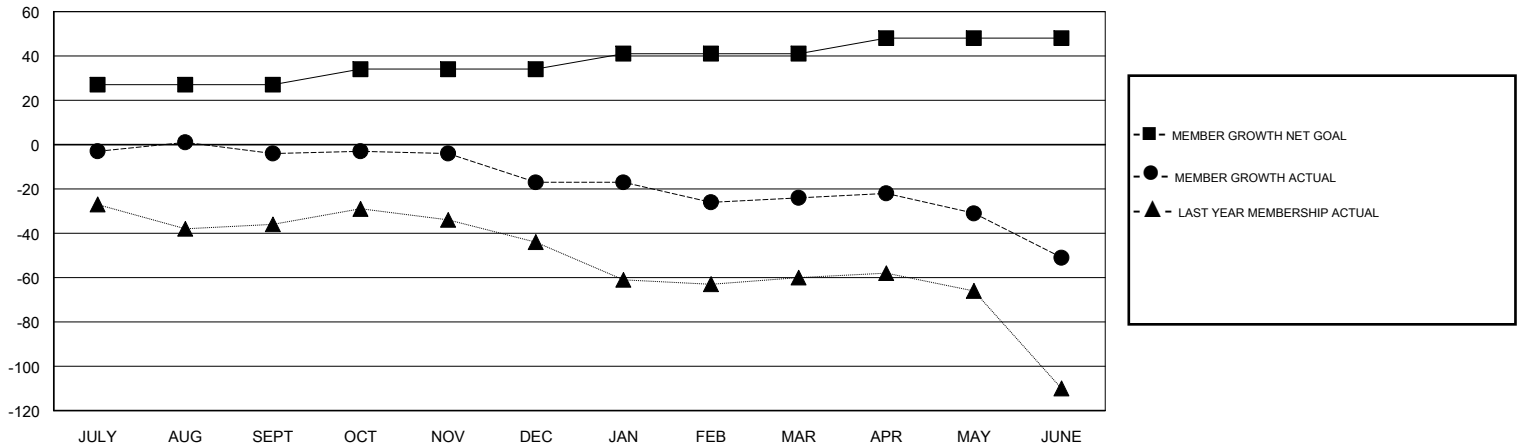
Clubs			
RESULTS FOR 2018-2019			
QUARTER	NEW CLUB GOAL	NEW CLUBS	DROPPED CLUBS
JULY/AUG/SEPT	1	0	0
OCT/NOV/DEC	0	0	0
JAN/FEB/MAR	0	0	0
APR/MAY/JUNE	0	0	1

Members			
RESULTS FOR 2018-2019			
QUARTER	MEMBER GROWTH NET GOAL	MEMBER GROWTH ACTUAL	DROPPED MEMBERS ACTUAL (including transfers)
JULY/AUG/SEPT	27	13	16
OCT/NOV/DEC	7	6	19
JAN/FEB/MAR	7	11	18
APR/MAY/JUNE	7	17	44

GOALS AND ACTUAL NEW CLUBS CUMULATIVE



GOALS AND ACTUAL MEMBERS CUMULATIVE



DROPPED CLUBS: 1	19 CLUBS OF 40 ADDED 1 OR MORE NEW MEMBERS	<u>GENDER DISTRIBUTION</u> MALE 720 (80.09%) FEMALE 179 (19.91%) Women Percentage Fiscal Year Goal: 35%
<u>DROPPED MEMBERS</u> DECEASED 18 CLUB CANCELLED 8 OTHER 71 TOTAL 97	<a href="#">CLICK HERE FOR CUMULATIVE MEMBERSHIP DATA</a>	TOTAL FAMILY UNIT MEMBERS 134 FAMILY MEMBERS PAYING HALF DUES 68